

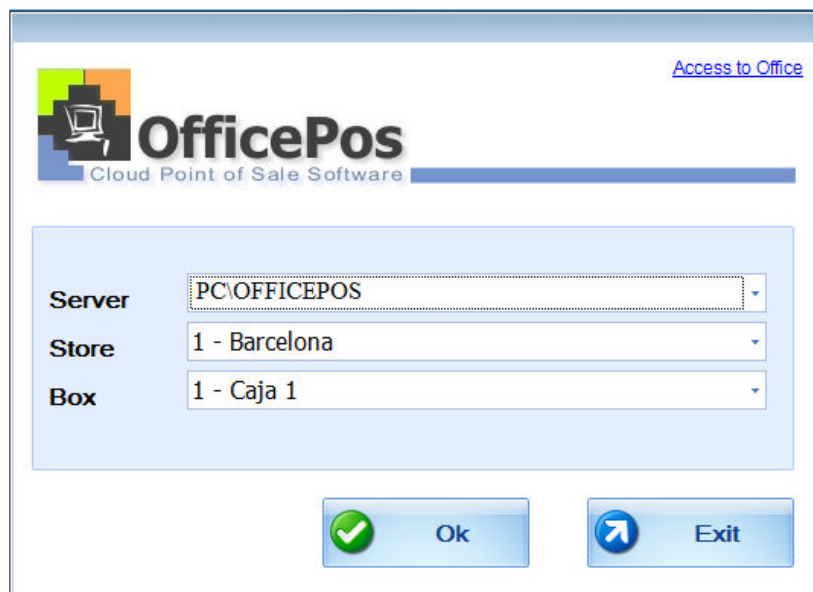


**Set Point of Sale - POS for first use.**

Double click on OfficePos - Point of Sale. On the next screen enter username and password; this screen will appear whenever you start the application:



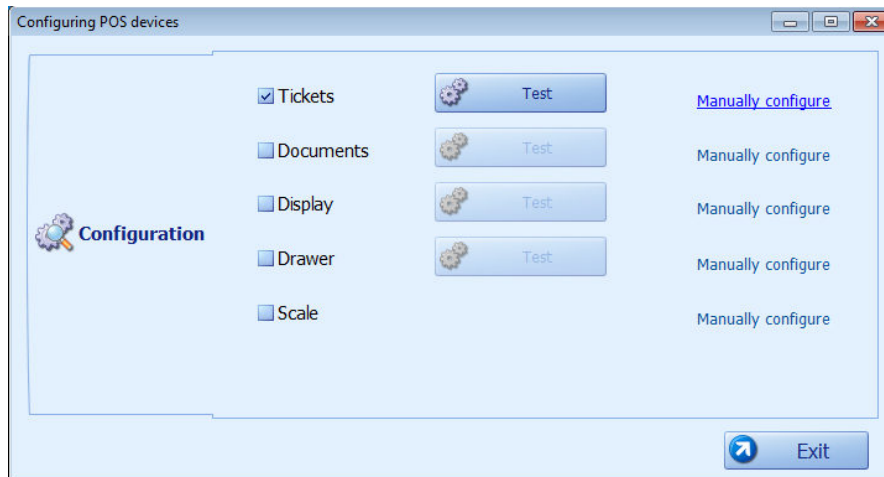
If this is the first time you open POS, you must enter the connection settings: server (by default that is created at installation), local and safe:



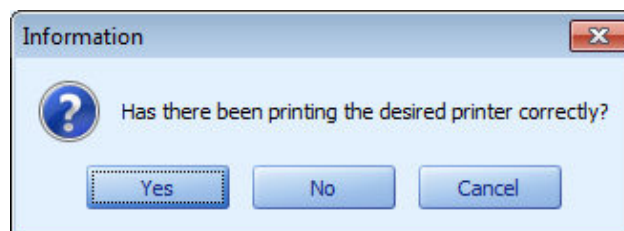
When you press “OK”, installation will configure the POS Terminal, this process can take few minutes.



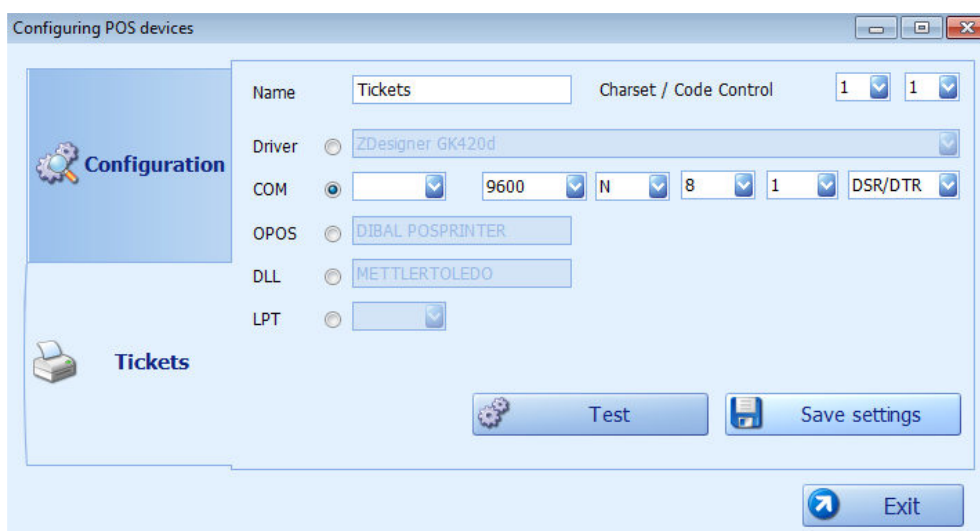
Then proceed to the configuration of peripherals, will open the application to configure the different devices:



Using the screening test, OfficePos detect automatically a peripheral, and release a test page (only if the peripheral is a printer):



If the test is good, press "yes" to configure the peripheral. Devices can be configured manually clicking on "Manually configure":



When the peripherals are configured, press on "Exit". OfficePos run automatically.